

**DURHAM DRAINAGE PRODUCTS**

THE LEADERS IN CIVIL, STORMWATER AND UTILITY PRODUCTS

**COMPANY PROFILE**

Established in 1948, the Durham Group of companies celebrates integrity, quality and service. As a result, it is highly regarded by the construction industry and utility, government and engineering professionals. Durham's factories are conveniently located in Sydney, Newcastle, Yass, Darwin and Adelaide, to service regional and major metropolitan areas.

**PRODUCTS AND SERVICES**

Durham specialise in the highest quality production of cast iron, ductile iron, galvanised mild-steel, stainless steel and reinforced precast concrete drainage, sewer and water quality products.

This includes:

- Stormwater
- Sewer
- Electrical
- Communication
- Roads and highways
- Rail
- Ports
- Airports
- Gas
- Oil
- Infrastructure

Durham has an extensive range of products available to suit a variety of applications, from pedestrian traffic (Class A) and main roads (Class D) to airport and taxiway requirements (Class G).

**PROJECTS**

- Sydney Light Rail Project | NSW
- Parramatta Light Rail | NSW
- Dubai and Sharjah International Airports | UAE
- Nadi Airport | Fiji
- Jackson Airport Redevelopment | Port Moresby
- PNG Sydney International Airport | NSW
- Tonga Container Terminal | Tonga
- Sydney Harbour Bridge Upgrade | NSW
- Circular Quay Passenger Terminal | NSW
- Sydney Olympic Park V8 Super Track | NSW
- Sydney Motorways M2, M4, M5 and M7 | NSW
- RTA (RMS) Bike Safe Program | NSW
- Diamond Beach Casino | Darwin NT
- Tiger Brennan Drive | Darwin NT
- Port of Brisbane | QLD
- Clem Jones Tunnel | QLD
- Northfield Women's Prison | Northfield SA
- State Hockey Centre | Gepps Cross SA
- Collie Power Station S1 and S2 | Collie WA

**SERVICEABLE AREAS**

Australia-wide. Our manufacturing yards are located in Sydney NSW; Yass, NSW; Heatherbrae, NSW; Humpty Doo, NT; and Murray Bridge, SA

**CONTACT**

Durham Drainage Products  
 Head Office | 27 Curtis Road  
 Mulgrave NSW 2756  
**P** 13000 DURHAM  
**P** 02 4587 7011  
**E** sales@durham.com.au  
**W** durham.com.au



**PAVER INFILL COVERS**



**INFILL COVERS**



**DUCTILE KERB GRATES**



**GALVANISED KERB GRATE**



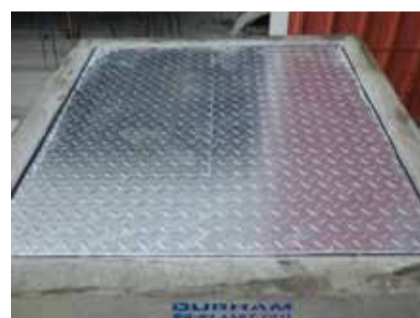
**DUCTILE PEDESTRIAN GRATES**



**GALVANISED TRENCH GRATE**



**KERB ENTRY UNITS**



**GALVANISED CHEQUER PLATES**



**WET CAST PITS**



**SPECIAL FABRICATION**