

# MADDISON 9500

↑↑ Alphaline **TINY HOMES**  
Creating luxury lifestyles

The Maddison is a luxurious tiny home that is designed with plenty of room to move. One of its best features is the spacious kitchen with an island bench



**SLEEPS**  
UPTO

**4**

**SIZE**

**HEIGHT:** 3900mm

**LENGTH:** 9500mm

**WIDTH:** 3000mm

*Also available in a 2400 (W)*

**FRAME**

90MM  
ENGINEERED  
STEEL FRAMING

**PURPOSE**

LONG TERM  
ACCOMMODATION,  
AIRBNB RENTALS &  
FARM STAYS

## INCLUSIONS

Just because our tiny homes are small doesn't mean you have to forgo the features you find in a traditional modern house. We design every tiny home with comfort, livability and luxury in mind.

*Some of our standard inclusions are:*

- > 600mm deep kitchen benches
- > Large 1200mm x 900mm shower
- > 90mm engineered steel framing
- > Gas cooktop, hot water
- > Wall and ceiling insulation

*Trailer specs/inclusions:*

- > Plated with Vehicle Identification Number
- > Duragal trailer frame
- > Electric brakes on all wheels
- > Adjustable supports for levelling

## DO YOU WANT TO CUSTOMISE THIS TINY HOME TO SUIT YOU?

One of the biggest advantages of Alphaline Tiny Homes is our ability to customize our designs based on your needs and preferences.

You will be able to work with our experienced design team to create a unique and personalised tiny home that meets your specific requirements.

## OPTIONAL UPGRADES:

- > **Solar Panels** > **Battery Packages** > **Decks**
- > **Double Glazing** > **Skylights** > **External Baths**
- > **Ceiling Fans** > **Window Coverings**
- > **Reverse Cycle Air Conditioning Systems**
- > **Composting Toilets** > **Fireplaces**

# IMAGES

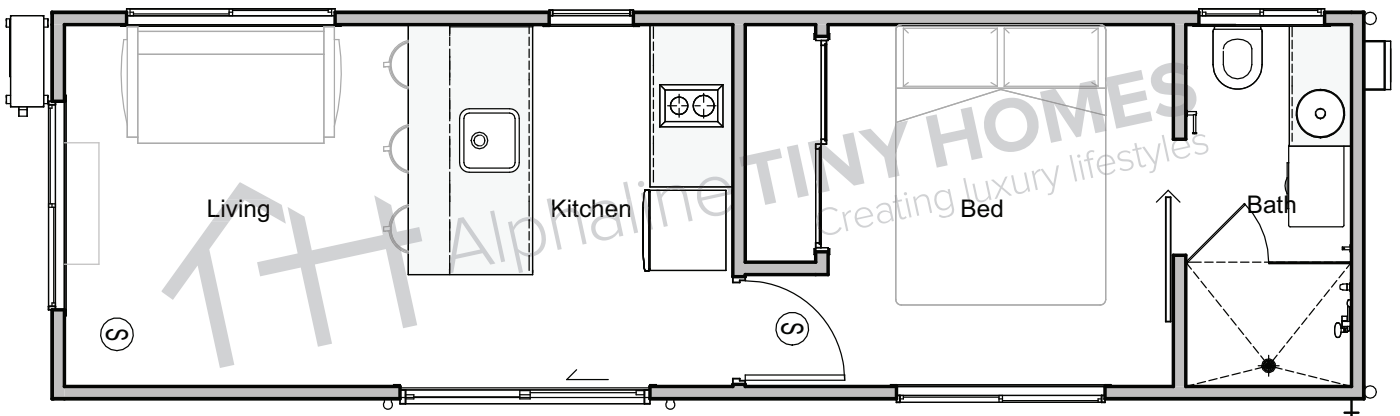
View images - see website for more



Please note: Some pictures may contain upgrades that are not included in standard configuration

# FLOOR PLAN

See our standard floor and layout plan



Call us on **1300 584 663** or visit **www.alphalinetinyhomes.com.au**

 Alphaline **TINY HOMES**  
Creating luxury lifestyles